



pearson
ferrier®



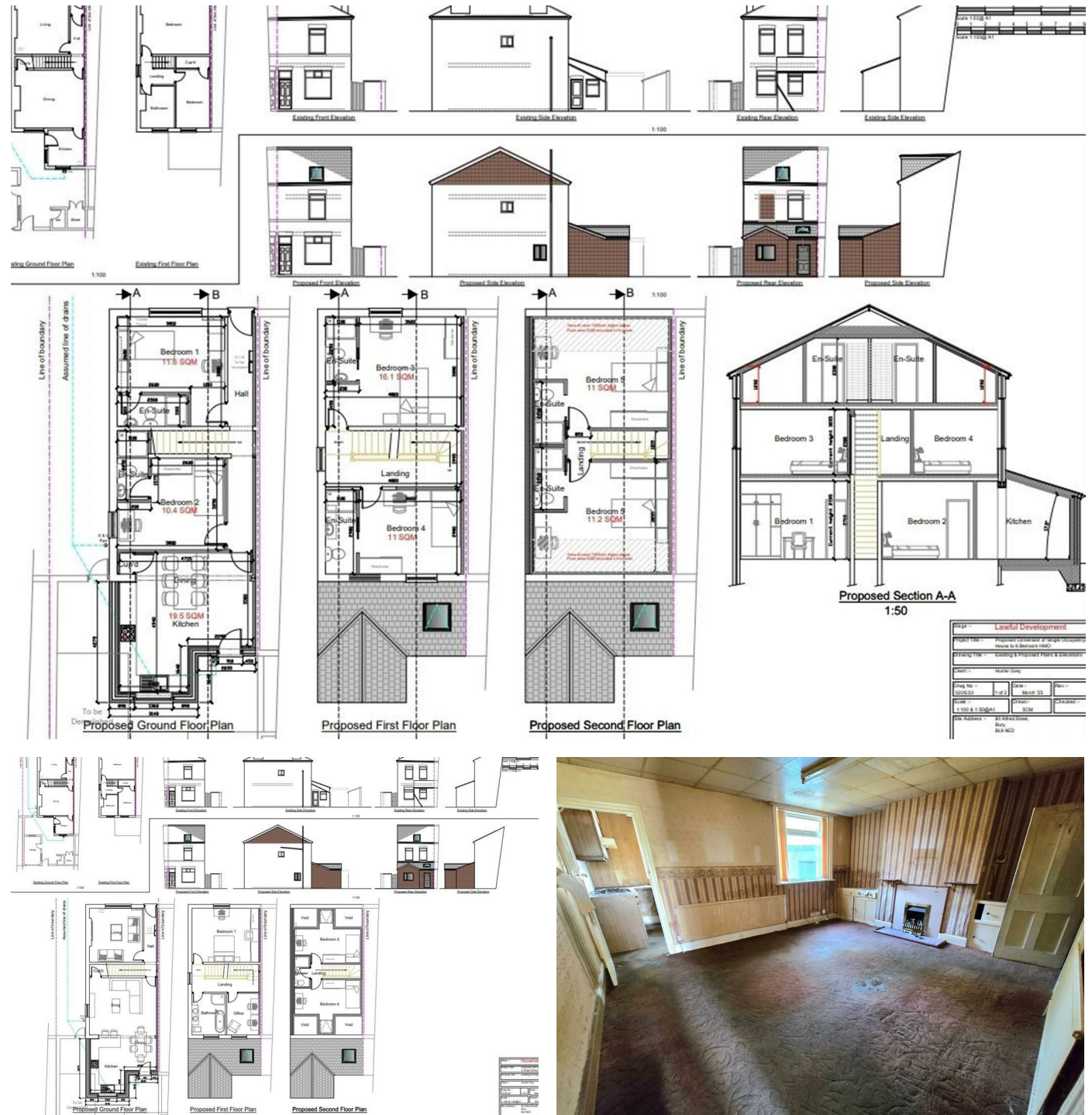
80 ALFRED STREET
Bury, BL9 9ED
Auction Guide £150,000

80 ALFRED STREET

Property at a glance

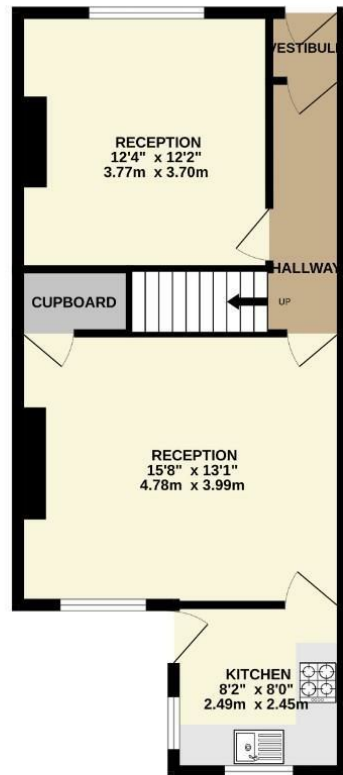
- PERMISSION FOR A 6 BED (ALL EN SUITE) H.M.O.
- LOCATED CLOSE TO PARKHILLS ROAD IN BURY
- WELL PLACED FOR BURY TOWN CENTRE
- IDEAL INVESTMENT OPPORTUNITY

For sale via Pearson Ferrier Auctions starting Tuesday 9th September, bidding will be on the Pearson Ferrier website and you can register to bid now. An exciting opportunity with planning passed for a six bedroom H.M.O. property all with en suites. Planning was first passed for a ground floor extension along with a loft conversion (details on Bury MBC planning ref 71814), with plans then having been approved under lawful development for change of use to a six bedroom H.M.O. (details on Bury MBC planning ref 72047). The property is well placed for Bury town centre with tram links to Manchester and offers good access to the North West motorway network. The property would also lend itself to a large four bedroom family home with office as per the plans on the extension planning. There are a good selection of local amenities including shops, parks and schools. Buyers are advised to check the legal pack before bidding, this will be available on the Pearson Ferrier website via the bidding window on the property when available. Any changes to the details will be updated on the Pearson Ferrier website before the auction.

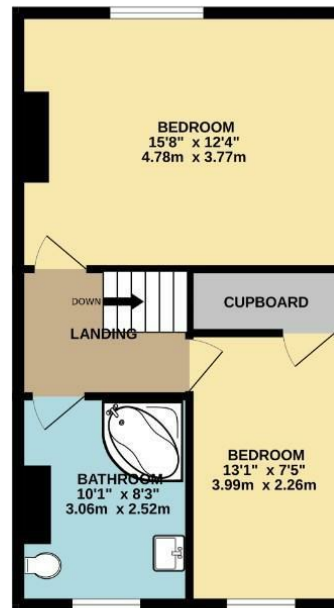




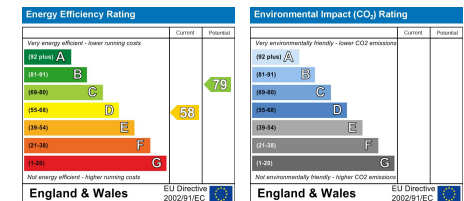
GROUND FLOOR
503 sq.ft. (46.7 sq.m.) approx.



1ST FLOOR
438 sq.ft. (40.7 sq.m.) approx.



TOTAL FLOOR AREA: 941 sq ft. (87.4 sq m.) approx.
Whilst every attempt has been made to ensure the accuracy of the floorplan contained here, measurements of doors, windows, rooms and any other items are approximate and no responsibility is taken for any error, omission or mis-statement. This plan is for illustrative purposes only and should be read as such by any prospective purchaser. The services, systems and appliances shown have not been tested and no guarantee as to their operability or efficiency can be given.
Measured using: LaserScope



Bury Office
435/7 Walmsley Road, Bury, Lancashire, BL9 5EU
Telephone: 0161 764 4440
Fax: #
Email: bury@pearsonferrier.co.uk

www.pearsonferrier.co.uk



All statements contained in these particulars are for indicative purposes only and are made without responsibility on the part of Pearson Ferrier and the vendors of this property and are not to be relied on as statements or representations of fact. Potential purchasers should satisfy themselves by inspection or otherwise as to the accuracy of such details contained in these particulars.